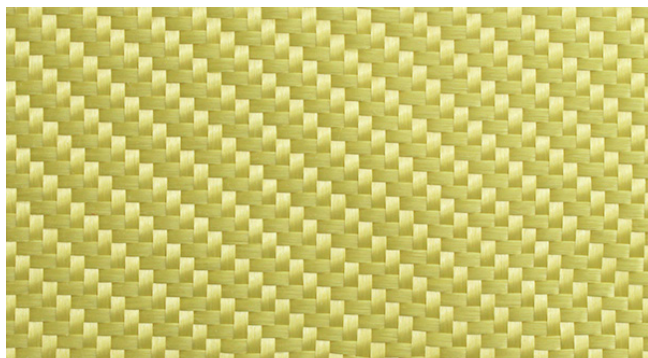


K-22-300-100

300g 2x2 Twill Weave Kevlar® Cloth



Key Features

- High impact and abrasion resistance
- Resilient to fracture separation

Description

High quality 300gsm woven Kevlar® fabric reinforcement using genuine Dupont® Kevlar yarn in a 2x2 twill weave for good drapability. This high performance aramid cloth can be used on its own to make panels with maximum impact strength or used in combination to add impact strength to carbon or glass fibre laminates.

This fabric is 1m (1000mm) wide and sold by the linear metre.

Typical Uses

- Motorsport Panels
- Kayaks/Canoes
- Sports Equipment

Kevlar is suitable for use in wet-lay, vacuum bagging or resin infusion. For maximum performance Kevlar should always be laminated with Epoxy resin.

Handling & Storage

Kevlar is sensitive to UV light so we recommend storing in a dark place to minimise the chance of UV degradation.

Specification

Property	Unit	Value
Material	-	Kevlar 49
Colour	-	Yellow
Format	-	Woven Fabric
Weave Type	-	2x2 Twill
Width	mm	1000
Areal Weight	g/cm ²	300
Thickness	mm	0.47
Consolidated Thickness	mm	0.4
Ends	/cm	4.75
Picks	/cm	4.75
Tensile Strength	mPa	3000
Tensile Modulus	gPa	112.4
Poisson's Ratio	-	0.36
Elongation at Break	%	2.4
Maximum Service Temperature In Air	°C	149 - 177
Density	g/cm ³	1.44

Disclaimer

This data is not to be used for specifications. Values listed are for typical properties and should not be considered minimum or maximum. Our technical advice, whether verbal or in writing, is given in good faith but Easy Composites Ltd gives no warranty; express or implied, and all products are sold upon condition that purchasers will make their own tests to determine the quality and suitability of the product for their particular application and circumstances.

Easy Composites Ltd shall be in no way responsible for the proper use and service of the product, nor for the safeguarding of personnel or property, all of which is the duty of the user. Any information or suggestions are without warranty of any kind and purchasers are solely responsible for any loss arising from the use of such information or suggestions. No information or suggestions given by us shall be deemed to be a recommendation to use any product in conflict with any existing patent rights. Before using any of our products, users should familiarise themselves with the relevant technical and safety datasheets provided by Easy Composites Ltd.

Leaders in materials, equipment and training for advanced composites

Easy Composites Ltd
Unit 39, Park Hall Business Village
Stoke-on-Trent, ST3 5XA
United Kingdom

Easy Composites Ltd
Beneluxbaan 16
Rijen, 5121 DC
Netherlands

W: www.easycomposites.com
E: sales@easycomposites.com
T: +44 (0) 1782 454499

Version 1.0
Revised 14/01/2025

Page 1 of 1